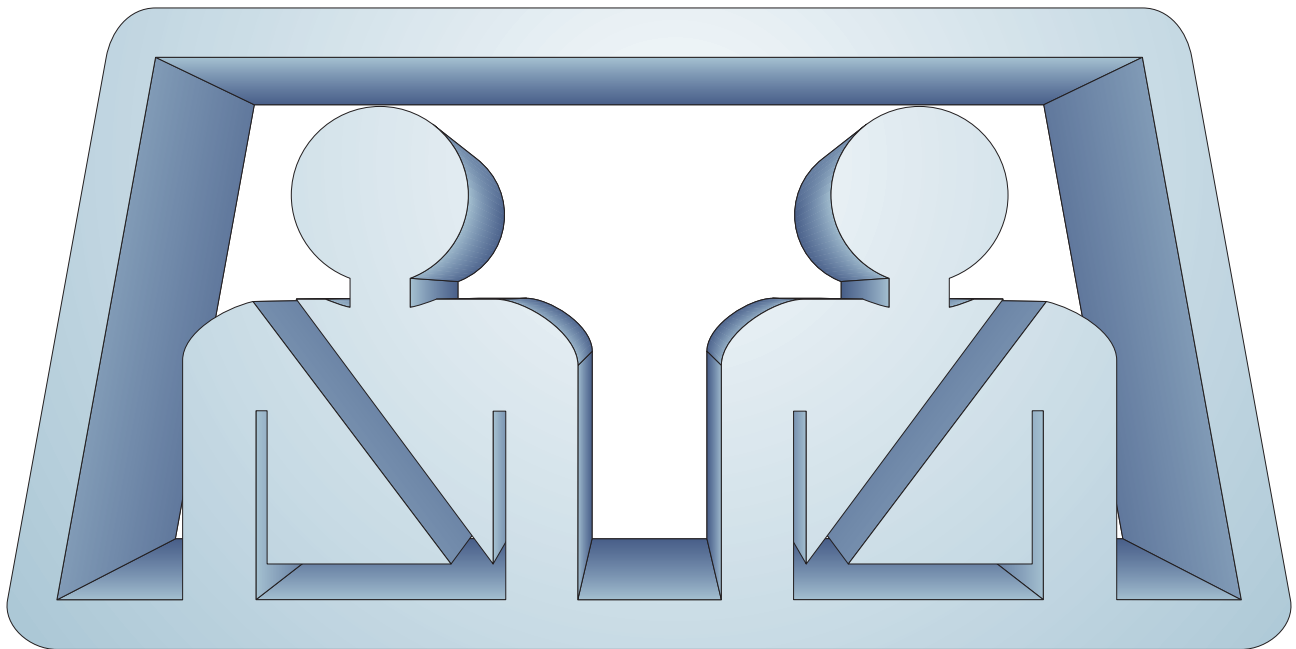


2010 Seat Belt Usage Survey



**Site surveys conducted by officers of the
Iowa State Patrol, Department of Public Safety**

**Statistics compiled and survey written by the
Office of Driver Services, Iowa Department of Transportation**

2010 Seat Belt Usage Survey

List of Charts

1. Seat Belt Usage Survey—Summary	2
2. Restraint Usage by Year and Road System	2
3. Usage Percent by Year—All Road Systems.....	3
4. Usage Percent by Year—Municipal Road System.....	3
5. Usage Percent by Year—Primary Road System	4
6. Usage Percent by Year—Secondary Road System	4
7. Usage Percent by Year—Interstate System.....	5
8. April Survey by Road System	6
9. July Survey by Road System	6
10. April/July Change.....	6
11. Usage by Road Systems and Population	7
12. Usage by Population and Road System	7
13. Usage by Area of State and Road System	7
14. Usage by Day of Week and Road System	8
15. Usage by Time of Day and Road System.....	8
16. Site Selection by County	9
17. Site Selection by Area of State	10
18. Site Selection by Population Category	10
19. Statewide Vehicle Miles of Travel	10
20. April Seat Belt Survey Sites	11
21. July Seat Belt Survey Sites.....	12

2010 Seat Belt Usage Survey

Chart 1

2010 Seat Belt Usage Survey--Summary

Road System	April Usage			July Usage			Change
	Observed	Used	Percentage	Observed	Used	Percentage	
Statewide Total	12,642	11,513	92.04%	12,467	11,559	93.09%	1.04%
Municipal	5,389	4,812	89.29%	5,206	4,783	91.87%	2.58%
Primary	4,380	3,993	91.16%	4,709	4,383	93.08%	1.91%
Secondary	1,055	1,001	94.88%	926	865	93.41%	-1.47%
Interstate	1,818	1,707	93.89%	1,626	1,528	93.97%	0.08%

Estimated statewide total April survey usage weighted by vehicles miles of travel and 95% confidence intervals for the estimated variance are +/- 0.14%

Estimated statewide total July survey usage weighted by vehicles miles of travel and 95% confidence intervals for the estimated variance are +/- 0.14%

Chart 2

Restraint Usage by Year and Road System

Survey	Statewide	Municipal	Primary	Secondary	Interstate
06/86	27%	20%	27%	24%	43%
09/86	46%	34%	48%	42%	62%
04/87	63%	54%	65%	64%	69%
09/87	56%	48%	56%	55%	67%
09/88	55%	46%	55%	52%	69%
09/89	59%	49%	56%	61%	72%
09/90	61%	49%	60%	61%	76%
09/91	68%	64%	64%	64%	79%
09/92	71%	62%	69%	71%	83%
09/93	73%	59%	73%	71%	80%
09/94	73%	63%	72%	72%	82%
09/95	75%	65%	75%	76%	85%
09/96	75%	69%	74%	71%	85%
11/97	75%	69%	74%	71%	85%
10/98	77%	70%	76%	79%	84%
10/99	78%	72%	78%	80%	84%
10/00	78%	73%	79%	77%	82%
10/01	81%	76%	83%	83%	81%
09/02	82%	79%	83%	87%	81%
03/03	82%	78%	86%	81%	82%
07/03	86%	82%	88%	83%	90%
04/04	84%	79%	84%	88%	84%
07/04	86%	84%	87%	86%	88%
04/05	85%	78%	87%	89%	85%
07/05	86%	81%	86%	87%	88%
04/06	89%	87%	89%	90%	90%
07/06	89%	84%	89%	90%	92%
07/07	92%	91%	92%	92%	94%

2010 Seat Belt Usage Survey

Chart 3
Seat Belt Usage Percent by Year—All Road Systems

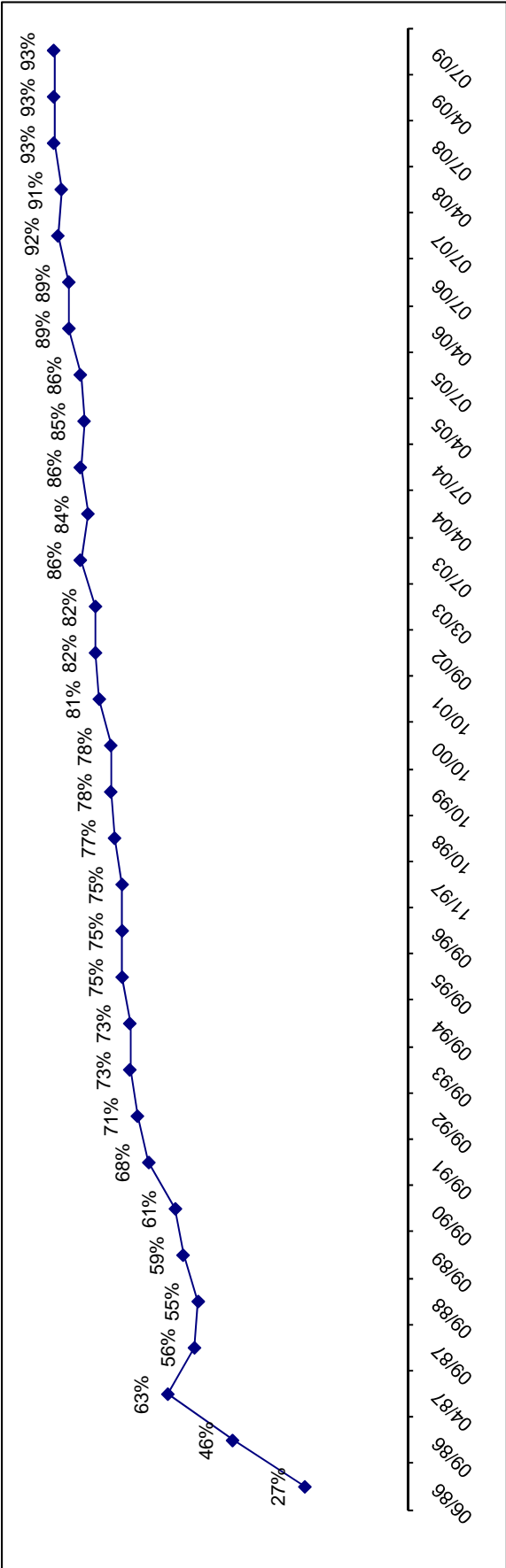
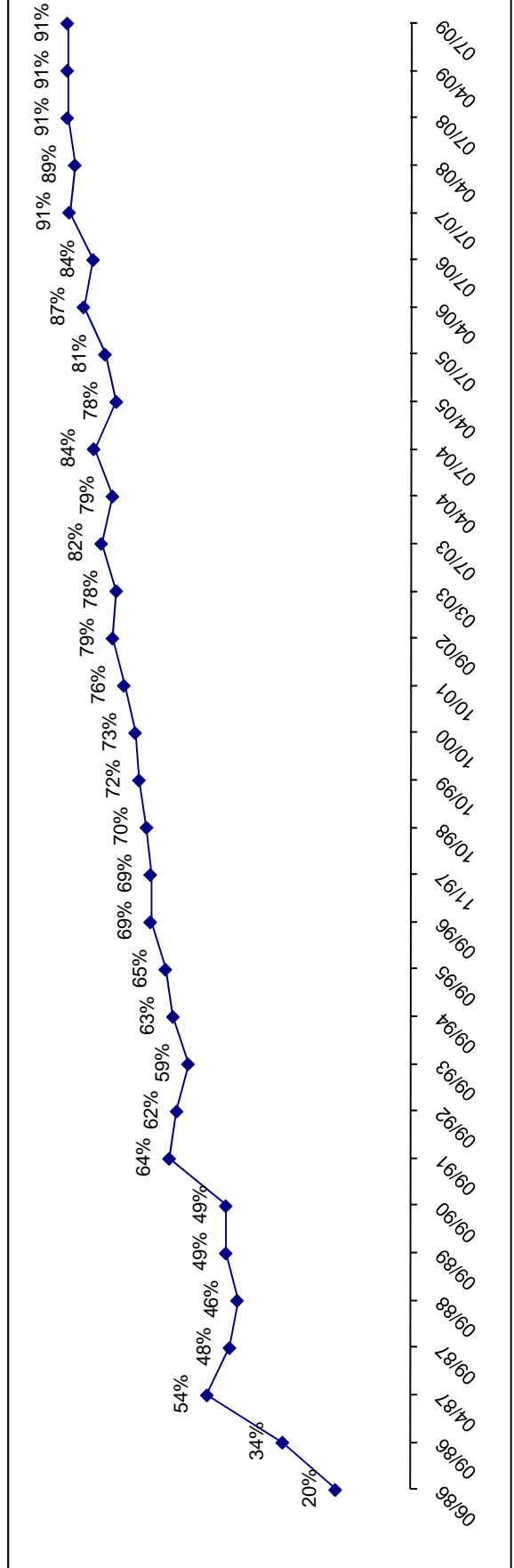


Chart 4
Seat Belt Usage Percent by Year—Municipal Road System



2010 Seat Belt Usage Survey

Chart 5
Seat Belt Usage Percent by Year—Primary Road System

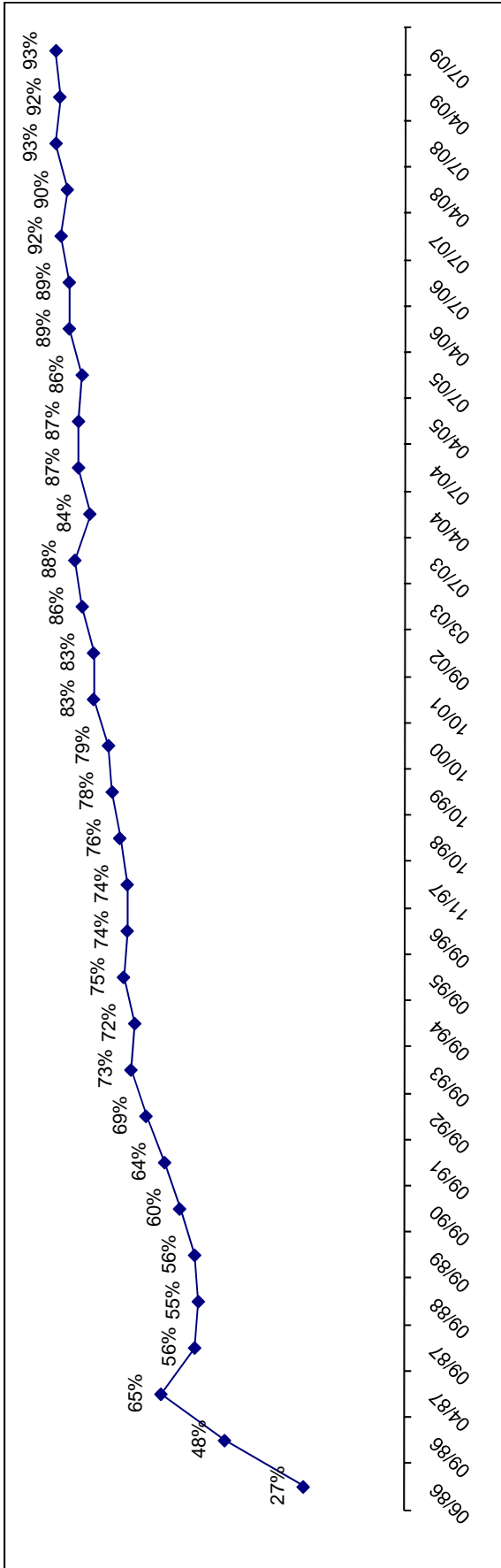
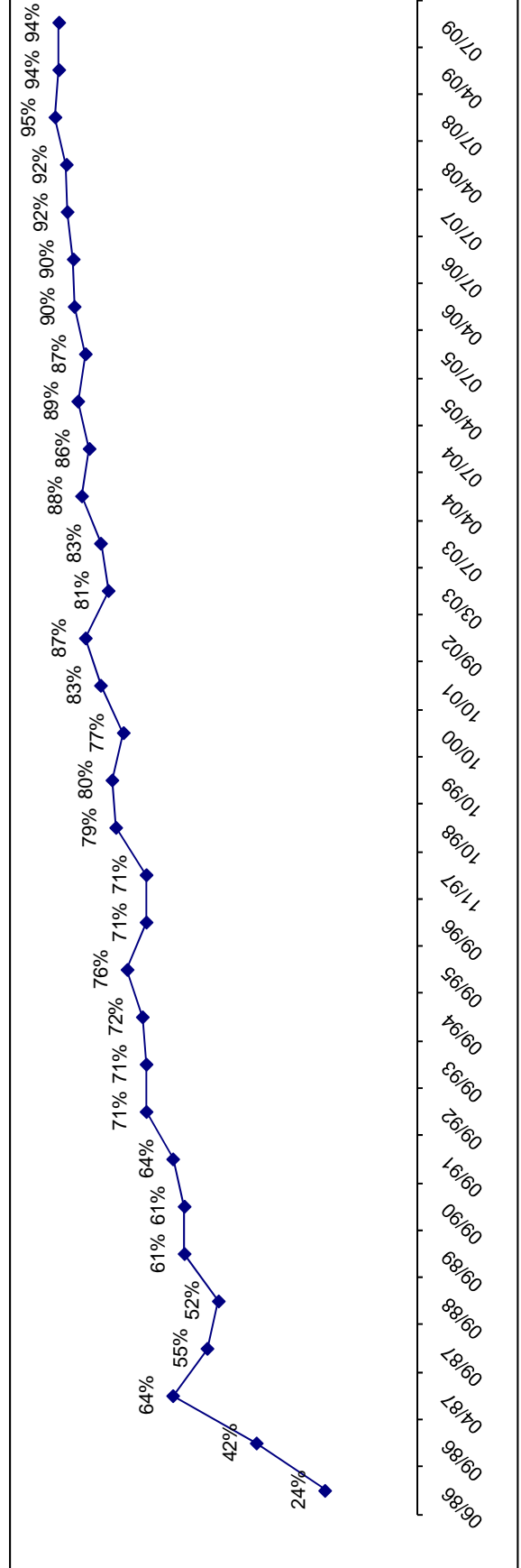
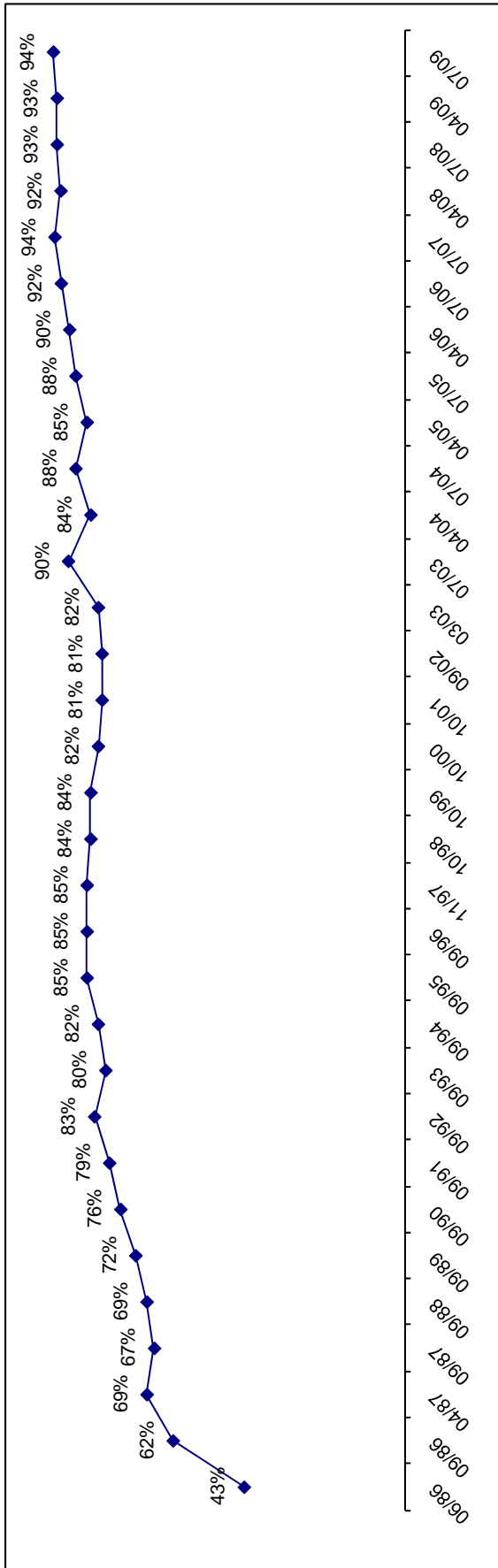


Chart 6
Seat Belt Usage Percent by Year—Secondary Road System



2010 Seat Belt Usage Survey

Chart 7
Seat Belt Usage Percent by Year—Interstate Highway System



2010 Seat Belt Usage Survey

Chart 8
April Survey by Road System

Road System	Drivers						
	Belt		None		Unknown		Total
	#	%	#	%	#	%	#
Municipal	3,949	88.0%	417	9.3%	119	2.7%	4,485
Primary	3,151	89.3%	302	8.6%	77	2.2%	3,530
Secondary	760	93.4%	37	4.5%	17	2.1%	814
Interstate	1,302	90.2%	84	5.8%	58	4.0%	1,444
Total	9,162	89.2%	840	8.2%	271	2.6%	10,273
	Passengers						
Municipal	863	81.4%	160	15.1%	37	3.5%	1,060
Primary	842	88.9%	85	9.0%	20	2.1%	947
Secondary	241	89.6%	17	6.3%	11	4.1%	269
Interstate	405	91.2%	27	6.1%	12	2.7%	444
Total	2,351	86.4%	289	10.6%	80	2.9%	2,720
	Total						
Municipal	4,812	86.8%	577	10.4%	156	2.8%	5,545
Primary	3,993	89.2%	387	8.6%	97	2.2%	4,477
Secondary	1,001	92.4%	54	5.0%	28	2.6%	1,083
Interstate	1,707	90.4%	111	5.9%	70	3.7%	1,888
Total	11,513	88.6%	1,129	8.7%	351	2.7%	12,993

Chart 9
July Survey by Road System

Road System	Drivers						
	Belt		None		Unknown		Total
	#	%	#	%	#	%	#
Municipal	3,999	90.0%	343	7.7%	102	2.3%	4,444
Primary	3,422	91.7%	255	6.8%	54	1.4%	3,731
Secondary	691	90.3%	51	6.7%	23	3.0%	765
Interstate	1,137	90.4%	72	5.7%	49	3.9%	1,258
Total	9,249	90.7%	721	7.1%	228	2.2%	10,198
	Passengers						
Municipal	784	89.1%	80	9.1%	16	1.8%	880
Primary	961	91.9%	71	6.8%	14	1.3%	1,046
Secondary	174	92.6%	10	5.3%	4	2.1%	188
Interstate	391	91.4%	26	6.1%	11	2.6%	428
Total	2,310	90.9%	187	7.4%	45	1.8%	2,542
	Total						
Municipal	4,783	89.8%	423	7.9%	118	2.2%	5,324
Primary	4,383	91.8%	326	6.8%	68	1.4%	4,777
Secondary	865	90.8%	61	6.4%	27	2.8%	953
Interstate	1,528	90.6%	98	5.8%	60	3.6%	1,686
Total	11,559	90.7%	908	7.1%	273	2.1%	12,740

Chart 10
April/July Change

Road System	Drivers						
	Belt		None		Unknown		Total
	#	%	#	%	#	%	#
Municipal	50	1.9%	-74	-1.6%	-17	-0.4%	-41
Primary	271	2.5%	-47	-1.7%	-23	-0.7%	201
Secondary	-69	-3.0%	14	2.1%	6	0.9%	-49
Interstate	-165	0.2%	-12	-0.1%	-9	-0.1%	-186
Total	87	1.5%	-119	-1.1%	-43	-0.4%	-75
	Passengers						
Municipal	-79	7.7%	-80	-6.0%	-21	-1.7%	-180
Primary	119	3.0%	-14	-2.2%	-6	-0.8%	99
Secondary	-67	3.0%	-7	-1.0%	-7	-2.0%	-81
Interstate	-14	0.1%	-1	0.0%	-1	-0.1%	-16
Total	-41	4.4%	-102	-3.3%	-35	-1.2%	-178
	Total						
Municipal	-29	3.1%	-154	-2.5%	-38	-0.6%	-221
Primary	390	2.6%	-61	-1.8%	-29	-0.7%	300
Secondary	-136	-1.7%	7	1.4%	-1	0.2%	-130
Interstate	-179	0.2%	-13	-0.1%	-10	-0.1%	-202
Total	46	2.1%	-221	-1.6%	-78	-0.6%	-253

2010 Seat Belt Usage Survey

Chart 11

Seat Belt Usage by Road System and Population

Population and Road System	Usage			
	April		July	
A Over 200,000	1,852	89.00%	1,888	91.69%
Municipal	667	87.65%	764	91.28%
Primary	541	87.26%	545	93.32%
Secondary	75	96.15%	36	97.30%
Interstate	569	91.48%	543	90.35%
B 150,000 TO 199,999	3,489	94.04%	2,921	95.96%
Municipal	1,370	92.51%	1,085	95.09%
Primary	1,026	94.56%	1,075	95.56%
Secondary	440	94.83%	303	96.81%
Interstate	653	96.03%	458	98.49%
C 75,000 TO 149,999	1,332	92.56%	1,517	93.24%
Municipal	532	89.71%	564	93.84%
Primary	429	93.87%	535	91.30%
Secondary	49	98.00%	58	96.67%
Interstate	322	94.99%	360	94.74%
D 25,000 TO 74,999	1,981	91.67%	2,133	92.10%
Municipal	981	89.59%	922	89.78%
Primary	739	94.14%	872	94.89%
Secondary	221	93.64%	267	91.75%
Interstate	40	88.89%	72	91.14%
E Under 25,000	2,859	87.94%	3,100	90.62%
Municipal	1,262	86.50%	1,448	90.50%
Primary	1,258	87.79%	1,356	90.70%
Secondary	216	95.15%	201	89.33%
Interstate	123	93.18%	95	94.06%
Total	11,513	91.07%	11,559	92.72%
Municipal	4,812	89.29%	4,783	91.87%
Primary	3,993	91.16%	4,383	93.08%
Secondary	1,001	94.88%	865	93.41%
Interstate	1,707	93.89%	1,528	93.97%

Chart 12

Seat Belt Usage by Population and Road System

Population and Road System	Usage			
	April		July	
Municipal	4,634	123.64%	4,766	
Over 200,000	947	88.75%	836	89.51%
150,000 to 199,999	1,370	92.51%	1,085	95.09%
75,000 to 149,999	532	89.71%	564	93.84%
25,000 to 74,999	523	86.16%	833	90.05%
Under 25,000	1,262	86.50%	1,448	90.50%
Primary	3,924	91.38%	4,250	93.20%
Over 200,000	406	87.69%	271	94.43%
150,000 to 199,999	1,026	94.56%	1,075	95.56%
75,000 to 149,999	429	93.87%	535	91.30%
25,000 to 74,999	805	94.04%	1,013	94.94%
Under 25,000	1,258	87.79%	1,356	90.70%
Secondary	1,248	94.33%	1,015	93.98%
Over 200,000	388	93.05%	327	96.46%
150,000 to 199,999	440	94.83%	303	96.81%
75,000 to 149,999	49	98.00%	58	96.67%
25,000 to 74,999	155	93.94%	126	88.11%
Under 25,000	216	95.15%	201	89.33%
Interstate	1,707	93.89%	1,528	93.97%
Over 200,000	569	91.48%	543	90.35%
150,000 to 199,999	653	96.03%	458	98.49%
75,000 to 149,999	322	94.99%	360	94.74%
25,000 to 74,999	40	88.89%	72	91.14%
Under 25,000	123	93.18%	95	94.06%
Total	11,513	91.07%	11,559	92.72%
Over 200,000	2,310	89.92%	1,977	91.49%
150,000 to 199,999	3,489	94.04%	2,921	95.96%
75,000 to 149,999	1,332	92.56%	1,517	93.24%
25,000 to 74,999	1,523	91.03%	2,044	92.32%
Under 25,000	2,859	87.94%	3,100	90.62%

Chart 13

Seat Usage by Area of State and Road System

Area of State and Road System	Usage			
	April		July	
Northeast	3,119	92.36%	2,942	93.90%
Municipal	161	92.53%	165	95.93%
Primary	1,203	91.41%	1,265	92.67%
Secondary	337	91.58%	406	92.69%
Interstate	1,418	93.35%	1,106	95.51%
Northwest	2,925	89.34%	2,824	91.19%
Municipal	302	96.49%	305	94.43%
Primary	533	90.03%	440	89.61%
Secondary	689	79.47%	606	85.11%
Interstate	1,401	93.28%	1,473	93.76%
Southeast	2,347	91.93%	2,365	93.85%
Municipal	771	90.39%	660	93.75%
Primary	761	93.15%	763	96.58%
Secondary	815	92.30%	942	91.81%
Interstate	0	0.00%	0	0.00%
Southwest	3,122	90.81%	3,428	92.22%
Municipal	967	94.43%	1,151	95.60%
Primary	1,918	89.25%	1,948	90.44%
Secondary	192	88.07%	274	91.95%
Interstate	45	95.74%	55	90.16%
Total	11,513	91.07%	11,559	92.72%
Municipal	2,201	93.10%	2,281	94.92%
Primary	4,415	90.58%	4,416	92.00%
Secondary	2,033	87.03%	2,228	90.06%
Interstate	2,864	93.35%	2,634	94.41%

2010 Seat Belt Usage Survey

Chart 14

Seat Belt Usage by Day of Week and Road System			
Day of Week and Road System	Usage		
	April		July
Sunday	1,973	90.46%	2,194 89.59%
Municipal	293	92.43%	297 95.19%
Primary	1,428	89.47%	1,516 89.07%
Secondary	228	93.44%	355 87.65%
Interstate	24	100.00%	26 86.67%
Monday	1,398	90.72%	1,411 92.71%
Municipal	430	96.41%	497 95.03%
Primary	179	96.76%	172 92.97%
Secondary	620	85.40%	544 89.92%
Interstate	169	91.85%	198 94.74%
Tuesday	2,013	91.04%	2,168 95.59%
Municipal	406	94.42%	533 98.16%
Primary	273	90.40%	312 93.13%
Secondary	544	86.08%	546 93.81%
Interstate	790	93.27%	777 96.16%
Wednesday	2,652	91.51%	2,666 93.51%
Municipal	600	94.34%	589 92.46%
Primary	1,076	89.15%	1,152 93.35%
Secondary	406	91.65%	572 93.77%
Interstate	570	93.14%	353 95.41%
Thursday	1,005	93.23%	748 92.23%
Municipal	0	0.00%	0 0.00%
Primary	546	91.76%	351 90.23%
Secondary	0	0.00%	0 0.00%
Interstate	459	95.03%	397 94.08%
Friday	917	89.55%	788 93.59%
Municipal	291	84.35%	241 94.51%
Primary	209	90.87%	218 93.56%
Secondary	15	100.00%	18 94.74%
Interstate	402	92.63%	311 92.84%
Saturday	1,555	90.99%	1,584 91.88%
Municipal	181	95.26%	124 93.23%
Primary	704	92.75%	695 96.26%
Secondary	220	79.71%	193 76.28%
Interstate	450	92.98%	572 92.86%
Total	11,513	91.07%	11,559 92.72%
Municipal	2,201	93.10%	2,281 94.92%
Primary	4,415	90.58%	4,416 92.00%
Secondary	2,033	87.03%	2,228 90.06%
Interstate	2,864	93.35%	2,634 94.41%

Chart 15

Seat Belt Usage by Time of Day and Road System			
Time of Day and Road System	Usage		
	April		July
7 a.m. to 7:59 a.m.	861	91.40%	1,099 94.74%
Municipal	113	86.26%	184 91.09%
Primary	598	92.00%	748 96.64%
Secondary	26	86.67%	21 77.78%
Interstate	124	94.66%	146 92.99%
8 a.m. to 8:59 a.m.	461	82.32%	500 84.75%
Municipal	72	93.51%	90 94.74%
Primary	210	73.94%	184 76.03%
Secondary	74	89.16%	88 93.62%
Interstate	105	90.52%	138 86.79%
9 a.m. to 9:59 a.m.	1,215	92.19%	1,261 92.04%
Municipal	579	92.79%	676 90.01%
Primary	213	92.61%	188 96.91%
Secondary	77	100.00%	52 94.55%
Interstate	346	89.41%	345 93.24%
10 a.m. to 10:59 a.m.	941	93.91%	932 94.14%
Municipal	367	92.44%	324 94.46%
Primary	574	94.88%	608 93.97%
Secondary	0	0.00%	0 0.00%
Interstate	0	0.00%	0 0.00%
11 a.m. to 11:59 a.m.	463	81.37%	439 87.28%
Municipal	0	0.00%	0 0.00%
Primary	119	90.15%	221 96.51%
Secondary	170	79.07%	128 72.73%
Interstate	174	78.38%	90 91.84%
12 p.m. to 12:59 p.m.	1,018	94.00%	1,002 95.07%
Municipal	88	97.78%	127 93.38%
Primary	605	94.24%	569 95.15%
Secondary	12	100.00%	15 83.33%
Interstate	313	92.33%	291 96.36%
1 p.m. to 1:59 p.m.	733	84.25%	737 91.33%
Municipal	91	60.67%	110 77.46%
Primary	454	86.64%	389 95.58%
Secondary	0	0.00%	0 0.00%
Interstate	188	95.92%	238 92.25%
2 p.m. to 2:59 p.m.	1,530	91.67%	1,445 91.40%
Municipal	136	94.44%	135 95.74%
Primary	588	89.77%	530 90.29%
Secondary	391	95.83%	368 92.23%
Interstate	415	89.83%	412 90.75%
3 p.m. to 3:59 p.m.	542	94.76%	439 96.91%
Municipal	0	0.00%	0 0.00%
Primary	259	93.17%	219 95.22%
Secondary	124	95.38%	123 99.19%
Interstate	159	96.95%	97 97.98%
4 p.m. to 4:59 p.m.	1,512	91.47%	1,467 93.14%
Municipal	279	93.00%	294 94.23%
Primary	419	91.29%	413 90.77%
Secondary	542	91.86%	341 96.33%
Interstate	272	89.47%	419 92.29%
5 p.m. to 5:59 p.m.	560	93.49%	513 94.30%
Municipal	362	92.58%	353 92.65%
Primary	96	94.12%	97 97.98%
Secondary	102	96.23%	63 98.44%
Interstate	0	0.00%	0 0.00%
6 p.m. to 6:59 p.m.	1,677	92.91%	1,725 93.75%
Municipal	104	94.55%	97 96.04%
Primary	839	92.10%	985 95.17%
Secondary	544	92.99%	492 89.62%
Interstate	190	95.48%	151 97.42%
Total	11,513	91.07%	11,559 92.72%
Municipal	2,191	90.76%	2,390 91.78%
Primary	4,974	90.90%	5,151 93.71%
Secondary	2,062	92.22%	1,691 90.91%
Interstate	2,286	90.71%	2,327 92.86%

2010 Seat Belt Usage Survey

Chart 16

Site Selection by County

County	Population	Category	Area	Sites	County	Population	Category	Area	Sites
Adair	8,243	E	SW		Jefferson	16,181	E	SE	
Adams	4,482	E	SW		Johnson	111,006	C	SE	
Allamakee	14,675	E	NE		Jones	20,221	E	SE	
Appanoose	13,721	E	SE		Keokuk	11,400	E	SE	1
Audubon	6,830	E	SW		Kossuth	17,163	E	NW	
Benton	25,308	E	NE		Lee	38,052	D	SE	
Black Hawk	128,012	B	NE		Linn	191,701	B	NE	9
Boone	26,224	D	NW		Louisa	12,183	E	SE	3
Bremer	23,325	B	NE		Lucas	9,422	E	SE	
Buchanan	21,093	E	NE		Lyon	11,763	E	NW	
Buena Vista	20,411	E	NW	5	Madison	14,019	E	SW	
Butler	15,305	E	NE	5	Mahaska	22,335	E	SE	
Calhoun	11,115	E	NW		Marion	32,052	D	SE	
Carroll	21,421	E	NE		Marshall	39,311	D	NE	
Cass	14,684	E	SW		Mills	14,547	E	SW	
Cedar	18,187	E	SE		Mitchell	10,874	E	NE	
Cerro Gordo	46,447	D	NE		Monona	10,020	E	NW	
Cherokee	13,035	E	NW		Monroe	8,016	E	SE	
Chickasaw	13,095	E	NE		Montgomery	11,771	E	SW	
Clarke	9,133	E	SW	2	Muscatine	41,722	E	SE	
Clay	17,372	E	NW	7	O'Brien	15,102	E	NW	
Clayton	18,678	E	NE		Osceola	7,003	E	NW	
Clinton	50,149	D	SE		Page	16,976	E	SW	
Crawford	16,942	E	NW		Palo Alto	10,147	E	NW	
Dallas	40,750	A	SW	2	Plymouth	24,849	E	NW	
Davis	8,541	E	SE		Pocahontas	8,662	E	NW	
Decatur	8,689	E	SW	6	Polk	374,601	A	SW	9
Delaware	18,404	E	NE		Pottawattamie	87,704	C	SW	12
Des Moines	42,351	D	SE		Poweshiek	18,815	E	SE	
Dickinson	16,424	E	NW		Ringgold	5,469	E	SW	
Dubuque	89,143	C	NE		Sac	11,529	E	NW	
Emmet	11,027	E	NW		Scott	158,668	B	SE	8
Fayette	22,008	D	NE		Shelby	13,173	E	SW	
Floyd	16,900	E	NE		Sioux	31,589	D	NW	
Franklin	10,704	E	NE	6	Story	79,981	D	NW	12
Fremont	8,010	E	SW		Tama	18,103	E	NE	
Greene	10,366	E	NW		Taylor	6,958	E	SW	
Grundy	12,369	E	NE		Union	12,309	E	SW	
Guthrie	11,353	E	NW		Van Buren	7,809	E	SE	
Hamilton	16,438	E	NW		Wapello	36,051	D	SE	7
Hancock	12,100	E	NW		Warren	40,671	A	SW	2
Hardin	18,812	E	NE		Washington	20,670	E	SE	4
Harrison	15,666	E	SW		Wayne	6,730	E	SE	
Henry	20,336	E	SE		Webster	40,235	D	NW	
Howard	9,932	E	NE		Winnebago	11,723	E	NW	
Humboldt	10,381	E	NW		Winneshiek	21,310	E	NE	
Ida	7,837	E	NW		Woodbury	103,877	C	NW	
Iowa	15,671	E	SE		Worth	7,909	E	NE	
Jackson	20,296	E	NE		Wright	14,334	E	NW	
Jasper	37,213	D	SE		Totals	2,926,324			100

NOTE: Population data based on the 2000 Census

2010 Seat Belt Usage Survey

Chart 17

Site Selection by Area of State

Area of State	Northeast	Southeast	Northwest	Southwest	Totals
Number of Selected Sites	20	23	24	33	100
Number of Possible Counties	25	25	29	20	99
Number of Selected Counties	3	5	3	6	17
Percentage of Counties Selected	12.00%	16.00%	10.34%	30.00%	17.17%
Total Population in Area	835,135	777,502	599,002	714,685	2,926,324.00
Percentage of Total State Populatio	28.54%	26.57%	20.47%	24.42%	100.00%

Chart 18

Site Selection by Population Category

Area of State	A - Over 200,000	B - 150,000 to 200,000	C - 75,000 to 150,000	D - 25,000 to 75,000	E - Under 25,000	Total
Number of Selected Sites	13	17	12	19	39	61
Number of Possible Counties	3	4	4	13	75	24
Number of Selected Counties	3	2	1	2	9	17
Percentage of Counties Selected	3.00%	2.00%	1.00%	2.00%	9.00%	17.00%
Total Population in Area	456,022	501,706	391,730	521,663	1,055,203	2,926,324.00
Percentage of Total State Populatio	15.58%	17.14%	13.39%	17.83%	36.06%	100.00%

Chart 19

2009 Statewide Vehicle Miles of Travel

Vehicle Miles	Municipal	Rural	Total	Percentage
Statewide Total	12,887,563	18,407,172	31,294,735	100.00%
Municipal	6,821,926	NA	6,821,926	21.80%
Primary	3,607,515	8,040,474	11,647,989	37.22%
Secondary	NA	5,333,610	5,333,610	17.04%
Interstate	2,458,122	5,033,088	7,491,210	23.94%

NOTE: Vehicle miles of travel reported in 1,000,000 and provided by the Iowa Dept. of Transportation's Office of Transportation Data & counts only cars, pickups, vans & SUVs

2010 Seat Belt Usage Survey

Chart 20

April Seat Belt Survey Sites

No	County	Area	Day	Time	Location	City	Population	System	Observed	Belted
1	Polk	SW	WED	6 PM	Aurora @ Beaver	Des Moines	A	M	353	314
2	Story	NW	SUN	12 PM	6th @ Grand	Ames	D	M	47	34
3	Story	NW	WED	1 PM	Duff Exit @ Hwy 30	Ames	D	P	157	135
4	Story	NW	THU	7 AM	E23 @ Hwy 69		D	S	71	66
5	Story	NW	SUN	10 AM	E63 @ Hwy 65		D	S	12	12
6	Polk	SW	THU	9 AM	7th & Grand	Des Moines	A	M	339	313
7	Story	NW	THU	9 AM	Hwy 133 @ Hwy 30		D	P	112	106
8	Dallas	SW	FRI	10 AM	Hwy 141 @ Hwy 210		A	P	33	31
9	Polk	SW	MON	3 PM	Hwy 160 @ Hwy 69	Ankeny	A	P	222	174
10	Story	NW	WED	2 PM	Hwy 210 @ Hwy 65		D	P	19	15
11	Story	NW	WED	8 PM	Hwy 210 @ Hwy 69		D	P	136	130
12	Story	NW	THU	1 PM	Hwy 65 @ Hwy 30		D	P	38	35
13	Polk	SW	THU	11 AM	Hwy 945 @ Hwy 931		A	P	19	18
14	Story	NW	THU	7 AM	I-35 Exit # 123		D	I	23	21
15	Polk	SW	MON	1 PM	I-35 Exit # 92		A	I	108	90
16	Polk	SW	SUN	8 AM	I-35 Rest Area		A	I	20	19
17	Story	NW	WED	4 PM	I-35 Rest Area		D	I	22	19
18	Dallas	SW	THU	5 PM	I-80 Exit # 110		A	I	295	283
19	Polk	SW	THU	3 PM	I-80 Exit # 143		A	I	199	177
20	Polk	SW	FRI	12 PM	Indianola Ave @ SE 8th	Des Moines	A	M	190	179
21	Story	NW	FRI	8 AM	J Ave. @ 6th	Nevada	D	M	72	65
22	Story	NW	THU	9 AM	Main @ Clark	Ames	D	M	96	79
23	Polk	SW	WED	3 PM	Meredith @ Merle Hay	Des Moines	A	M	524	454
24	Clarke	SW	TUE	8 AM	E Washington @ Main St	Osceola	E	M	43	39
25	Decatur	SW	SAT	1 PM	J 12 @ Hwy 69	Weldon	E	P	24	24
26	Warren	SW	TUE	3 PM	Hwy 28 @ Hwy 92	Martensdale	A	P	189	183
27	Clarke	SW	TUE	1 PM	Hwy 34 @ Hwy 69		E	P	230	204
28	Decatur	SW	TUE	4 PM	I-35 Exit # 12		E	I	77	77
29	Decatur	SW	SAT	8 AM	I-35 Exit # 22		E	I	13	8
30	Decatur	SW	TUE	2 PM	J 20 @ R69	Garden Grove	E	S	6	5
31	Decatur	SW	TUE	5 PM	J 66 @ Hwy 69	Davis City	E	S	13	12
32	Warren	SW	TUE	6 PM	R 57 @ Hwy 92		A	S	78	75
33	Decatur	SW	SAT	10 AM	West Jct. Hwy 69 @ Hwy 2	Leon	E	P	48	40
34	Pottawattamie	SW	TUE	10 AM	9th Ave. @ S 16th	Council Bluffs	C	M	206	186
35	Pottawattamie	SW	SAT	12 PM	A Ave & 25th St	Council Bluffs	C	M	387	346
36	Pottawattamie	SW	TUE	8 AM	Hwy 191 @ Hwy 83		C	P	55	52
37	Pottawattamie	SW	SAT	8 AM	Hwy 6 @ Hwy 191		C	P	131	124
38	Pottawattamie	SW	TUE	12 PM	Hwy 6 @ Hwy 59		C	P	65	63
39	Pottawattamie	SW	SUN	4 PM	Hwy 83 @ Hwy 59		C	P	90	85
40	Pottawattamie	SW	TUE	10 AM	Hwy 92 @ Hwy 59		C	P	116	105
41	Pottawattamie	SW	TUE	12 PM	I-29 Exit # 47		C	I	83	80
42	Pottawattamie	SW	SUN	6 PM	I-80 Exit # 40		C	I	112	106
43	Pottawattamie	SW	SUN	2 PM	I-80 Rest Area		C	I	144	136
44	Pottawattamie	SW	TUE	8 AM	L 55 @ Hwy 6		C	S	23	23
45	Pottawattamie	SW	SAT	10 AM	M 16 @ Hwy 92		C	S	27	26
46	Buena Vista	NW	MON	9 AM	C 49 @ Hwy 71		E	S	48	48
47	Buena Vista	NW	WED	3 PM	Hwy 110 @ Hwy 7		E	P	43	40
48	Buena Vista	NW	WED	5 PM	Hwy 7 @ Hwy 71		E	P	60	53
49	Buena Vista	NW	MON	11 AM	Hwy 7 @ Hwy 71		E	P	21	21
50	Buena Vista	NW	WED	1 PM	Lake @ Third	Storm Lake	E	M	70	68
51	Clay	NW	SAT	5 PM	4th @ Grand	Spencer	E	M	314	291
52	Clay	NW	SUN	5 PM	B 53 @ Hwy 71		E	S	15	15
53	Clay	NW	SUN	1 PM	Grand @ 18th	Spencer	E	M	308	288
54	Clay	NW	SUN	3 PM	Hwy 10 @ Hwy 71		E	P	48	46
55	Clay	NW	SAT	1 PM	Hwy 18 @ Hwy 71		E	P	98	97
56	Clay	NW	SAT	3 PM	B40 @ Hwy 71		E	P	34	33
57	Clay	NW	SUN	2 PM	N 14 @ Hwy 18		E	S	35	34
58	Franklin	NE	FRI	9 AM	1st @ 1st Ave	Hampton	E	M	122	81
59	Franklin	NE	TUE	11 AM	C 25 @ Hwy 65		E	S	30	26
60	Butler	NE	WED	7 AM	C 55 @ Hwy 14		E	S	3	1
61	Franklin	NE	WED	9 AM	S14 & Hwy 107		E	P	18	16
62	Butler	NE	WED	3 PM	Hwy 14 @ Hwy 20		E	P	72	51
63	Butler	NE	FRI	11 AM	Hwy 14 @ Hwy 3		E	P	54	41
64	Butler	NE	TUE	9 AM	Hwy 188 @ Hwy 3		E	P	59	47
65	Franklin	NE	TUE	7 AM	Hwy 65 @ Hwy 3		E	P	220	153
66	Franklin	NE	WED	11 AM	I-35 Exit # 165		E	I	35	31
67	Franklin	NE	FRI	7 AM	I-35 Exit # 170		E	I	7	7
68	Butler	NE	WED	5 PM	Main @ Railroad	Allison	E	M	150	91
69	Linn	NE	WED	9 AM	8th Ave @ 2nd	Cedar Rapids	B	M	255	232
70	Linn	NE	SUN	4 PM	E 34 @ Hwy 13		B	S	164	159
71	Linn	NE	SAT	3 PM	E 70 @ Hwy 151		B	S	76	73
72	Linn	NE	SUN	2 PM	First Ave @ 29th	Cedar Rapids	B	M	358	332
73	Linn	NE	WED	11 AM	Hwy 1 @ Hwy 30		B	P	163	154
74	Linn	NE	SUN	6 PM	Hwy 13 @ Hwy 151		B	P	294	279
75	Linn	NE	SAT	1 PM	Hwy 30 @ Hwy 1		B	P	310	296
76	Linn	NE	SAT	5 PM	I-380 Mile Marker 13		B	I	252	244
77	Linn	NE	WED	7 AM	I-380 Mile Marker 25		B	I	106	102
78	Scott	SE	MON	4 PM	F 55 Exit @ Hwy 61		B	P	71	65
79	Scott	SE	SUN	4 PM	Hwy 61 @ Hwy 22 Ramp		B	P	47	42
80	Scott	SE	MON	6 PM	I-280 Hwy 61 Exit		B	I	192	183
81	Scott	SE	SUN	6 PM	I-80 Exit # 284 (Y40)		B	I	130	124
82	Scott	SE	MON	2 PM	Kimberly @ Harrison	Davenport	B	M	326	304
83	Scott	SE	TUE	4 PM	Locust @ Brady	Davenport	B	M	542	502
84	Scott	SE	THU	6 PM	Long Grove Exit @ Hwy 61		B	P	200	190
85	Scott	SE	SUN	2 PM	Y 48 @ Hwy 61		B	S	224	208
86	Washington	SE	FRI	4 PM	East 7th @ North 4th	Washington	E	M	146	134
87	Washington	SE	FRI	2 PM	G6W @ Hwy 92		E	S	45	43
88	Washington	SE	SAT	8 AM	Hwy 1 @ Hwy 92		E	P	113	108
89	Washington	SE	TUE	9 AM	Hwy 218 Ramp @ Hwy 92		E	P	85	85
90	Louisa	SE	SAT	12 PM	Hwy 92 @ Hwy 61		E	P	206	199
91	Louisa	SE	SAT	10 AM	South 4th @ Washington	Wapello	E	M	72	60
92	Louisa	SE	FRI	6 PM	X 43 @ Hwy 92		E	S	32	32
93	Wapello	SE	SAT	4 PM	Church @ Richmond	Ottumwa	D	M	235	210
94	Wapello	SE	SAT	6 PM	East Jct Hwy 34 & Hwy 63		D	P	227	219
95	Wapello	SE	TUE	8 AM	Hwy 137 @ Hwy 63		D	P	105	93
96	Keokuk	SE	SUN	12 PM	Hwy 149 @ Hwy 23		D	P	102	96
97	Wapello	SE	SUN	8 AM	Hwy 16 @ Hwy 34		D	P	46	45
98	Wapello	SE	SUN	10 AM	T 61 @ Hwy 34		D	S	82	80
99	Wapello	SE	TUE	10 AM	V 37 (College St) @ Hwy 34 Agency		D	S	71	63
100	Wapello	SE	TUE	12 PM	Wapello St @ Albia Rd	Ottumwa	E	M	234	210
									12,642	11,513

2009 Seat Belt Usage Survey

Chart 21

July Seat Belt Survey Sites										
No	County	Area	Day	Time	Location	City	Population	System	Observed	Belted
1	Polk	SW	WED	8 AM	Aurora @ Beaver	Des Moines	A	M	225	193
2	Story	NW	WED	10 AM	6th @ Grand	Ames	D	M	128	121
3	Story	NW	WED	4 PM	Duff Exit @ Hwy 30	Ames	D	P	297	274
4	Story	NW	FRI	4 PM	E 23 @ Hwy 69		D	S	148	141
5	Story	NW	FRI	11 AM	E 63 @ Hwy 65		D	S	18	15
6	Polk	SW	WED	12 PM	Grand @ 7th	Des Moines	A	M	302	291
7	Story	NW	SUN	6 PM	Hwy 133 @ Hwy 30		D	P	96	88
8	Dallas	SW	FRI	11 AM	Hwy 141 @ Hwy 210		A	P	65	64
9	Polk	SW	WED	10 AM	Hwy 160 @ Hwy 69	Ankeny	A	P	98	90
10	Story	NW	SUN	4 PM	Hwy 210 @ Hwy 65		D	P	23	22
11	Story	NW	WED	12 PM	Hwy 210 @ Hwy 69		D	P	100	95
12	Story	NW	WED	6 PM	Hwy 65 @ Hwy 30		D	P	81	78
13	Polk	SW	TUE	12 PM	Hwy 945 @ Hwy 931		A	P	31	28
14	Story	NW	TUE	10 AM	I-35 Exit # 123		D	I	31	29
15	Polk	SW	TUE	8 AM	I-35 Exit # 92		A	I	175	157
16	Polk	SW	FRI	2 PM	I-35 Rest Area		A	I	59	56
17	Story	NW	FRI	6 PM	I-35 Rest Area		D	I	48	43
18	Dallas	SW	SUN	2 PM	I-80 Exit # 110		A	I	279	257
19	Polk	SW	FRI	7 AM	I-80 Exit # 143		A	I	88	73
20	Polk	SW	FRI	7 AM	Indianola Ave @ SE 8th	Des Moines	A	M	302	254
21	Story	NW	WED	8 AM	J Ave. @ 6th	Nevada	D	M	73	68
22	Story	NW	FRI	9 AM	Main @ Clark	Ames	D	M	148	132
23	Polk	SW	FRI	9 am	Meredith @ Merle Hay	Des Moines	A	M	407	389
24	Clarke	SW	MON	7 AM	E Washington @ Main St	Osceola	E	M	78	65
25	Decatur	SW	MON	11 AM	Hwy 266 @ Hwy 69	Weldon	E	P	30	26
26	Warren	SW	WED	6 PM	Hwy 28 @ Hwy 92	Martensdale	A	P	93	89
27	Clarke	SW	MON	9 AM	Hwy 34 @ Hwy 69		E	P	245	235
28	Decatur	SW	WED	4 PM	I-35 Exit # 12		E	I	55	52
29	Decatur	SW	MON	8 AM	I-35 Exit # 22		E	I	12	12
30	Decatur	SW	WED	2 PM	J 20 @ Hwy 204	Garden Grove	E	S	10	10
31	Decatur	SW	MON	12 PM	J 66 @ Hwy 69	Davis City	E	S	17	14
32	Warren	SW	FRI	6 PM	R 57 @ Hwy 92		A	S	37	36
33	Decatur	SW	MON	10 AM	West Jct. Hwy 69 @ Hwy 2	Leon	E	P	57	54
34	Pottawattamie	SW	MON	6 PM	9th Ave. @ S 16th	Council Bluffs	C	M	231	219
35	Pottawattamie	SW	MON	3 PM	A Ave & 25th St	Council Bluffs	C	M	370	345
36	Pottawattamie	SW	MON	2 PM	Hwy 191 @ Hwy 83		C	P	86	81
37	Pottawattamie	SW	SAT	8 AM	Hwy 6 @ Hwy 191		C	P	157	146
38	Pottawattamie	SW	SAT	12 PM	Hwy 6 @ Hwy 59		C	P	142	129
39	Pottawattamie	SW	MON	10 AM	Hwy 83 @ Hwy 59		C	P	42	41
40	Pottawattamie	SW	SAT	10 AM	Hwy 92 @ Hwy 59		C	P	159	138
41	Pottawattamie	SW	MON	1 PM	I-29 Exit # 47		C	I	110	105
42	Pottawattamie	SW	MON	5 PM	I-80 Exit # 40		C	I	129	120
43	Pottawattamie	SW	MON	4 PM	I-80 Rest Area		C	I	141	135
44	Pottawattamie	SW	MON	12 PM	L 55 @ Hwy 6		C	S	27	27
45	Pottawattamie	SW	MON	8 AM	M 16 @ Hwy 92		C	S	33	31
46	Buena Vista	NW	SUN	12 PM	C 49 @ Hwy 71		E	S	48	44
47	Buena Vista	NW	SUN	10 AM	Hwy 110 @ Hwy 7		E	P	35	34
48	Buena Vista	NW	WED	11 AM	Hwy 7 @ Hwy 71		E	P	63	59
49	Buena Vista	NW	WED	9 AM	Hwy 7 @ Hwy 71		E	P	58	54
50	Buena Vista	NW	SUN	8 AM	Lake @ Third	Storm Lake	E	M	73	66
51	Clay	NW	SUN	7 AM	4th @ Grand	Spencer	E	M	254	248
52	Clay	NW	SAT	9 AM	B 53 @ Hwy 71		E	S	19	18
53	Clay	NW	SAT	11 AM	Grand @ 18th	Spencer	E	M	433	425
54	Clay	NW	SAT	8 AM	Hwy 10 @ Hwy 71		E	P	34	32
55	Clay	NW	SAT	12 PM	Hwy 18 @ Hwy 71		E	P	130	124
56	Clay	NW	SAT	10 AM	B 40 @ Hwy 71		E	P	42	42
57	Clay	NW	SAT	6 PM	N 14 @ Hwy 18		E	S	28	27
58	Franklin	NE	THU	4 PM	1st @ 1st Ave	Hampton	E	M	115	70
59	Franklin	NE	WED	5 PM	C 25 @ Hwy 65		E	S	27	21
60	Butler	NE	THU	5 PM	C 55 @ Hwy 14		E	S	18	12
61	Franklin	NE	MON	3 PM	S 14 @ Hwy 3		E	P	16	12
62	Butler	NE	THU	2 PM	Hwy 14 @ Hwy 20		E	P	62	51
63	Butler	NE	WED	3 PM	Hwy 14 @ Hwy 3		E	P	36	25
64	Butler	NE	MON	5 PM	Hwy 188 @ Hwy 3		E	P	68	58
65	Franklin	NE	MON	1 PM	Hwy 65 @ Hwy 3		E	P	164	116
66	Franklin	NE	THU	3 PM	I-35 Exit # 165		E	I	28	25
67	Franklin	NE	THU	6 PM	I-35 Exit # 170		E	I	6	6
68	Butler	NE	WED	1 PM	Main @ Railroad	Allison	E	M	142	110
69	Linn	NE	MON	2 PM	8th Ave @ 2nd	Cedar Rapids	B	M	281	258
70	Linn	NE	THU	10 AM	E 34 @ Hwy 13		B	S	99	97
71	Linn	NE	THU	12 PM	E 70 @ Hwy 151		B	S	30	28
72	Linn	NE	THU	8 AM	First Ave @ 29th	Cedar Rapids	B	M	268	253
73	Linn	NE	SAT	4 PM	Hwy 1 @ Hwy 30		B	P	245	237
74	Linn	NE	SAT	6 PM	Hwy 13 @ Hwy 151		B	P	348	326
75	Linn	NE	MON	6 PM	Hwy 30 @ Hwy 1		B	P	220	209
76	Linn	NE	SAT	2 PM	I-380 Mile Marker 13		B	I	128	127
77	Linn	NE	MON	4 PM	I-380 Mile Marker 25		B	I	64	63
78	Scott	SE	SUN	12 PM	F 55 Exit @ Hwy 61		B	P	74	69
79	Scott	SE	FRI	12 PM	Hwy 61 @ Hwy 22 Ramp		B	P	97	95
80	Scott	SE	SUN	8 AM	I-280 Hwy 61 Exit		B	I	149	145
81	Scott	SE	MON	8 AM	I-80 Exit # 284 (Y40)		B	I	124	123
82	Scott	SE	FRI	8 AM	Kimberly @ Harrison	Davenport	B	M	295	287
83	Scott	SE	SUN	10 AM	Locust @ Brady	Davenport	B	M	297	287
84	Scott	SE	MON	10 AM	Long Grove Exit @ Hwy 61		B	P	141	139
85	Scott	SE	MON	12 PM	Y 48 @ Hwy 61		B	S	184	178
86	Washington	SE	THU	2 PM	East 7th @ North 4th	Washington	E	M	128	120
87	Washington	SE	FRI	6 PM	G6W @ Hwy 92		E	S	27	26
88	Washington	SE	TUE	8 AM	Hwy 1 @ Hwy 92		E	P	193	176
89	Washington	SE	FRI	4 PM	Hwy 218 Ramp @ Hwy 92		E	P	161	100
90	Louisa	SE	TUE	12 PM	Hwy 92 @ Hwy 61		E	P	101	158
91	Louisa	SE	TUE	10 AM	South 4th @ Washington	Wapello	E	M	69	61
92	Louisa	SE	FRI	2 PM	X 43 @ Hwy 92		E	S	31	29
93	Wapello	SE	THU	12 PM	Church @ Richmond	Ottumwa	D	M	279	238
94	Wapello	SE	TUE	4 PM	East Jct. Hwy 34 @ Hwy 63		D	P	277	260
95	Wapello	SE	MON	1 PM	Hwy 137 @ Hwy 63		D	P	163	152
96	Keokuk	SE	TUE	6 PM	Hwy 149 @ Hwy 23		D	P	99	97
97	Wapello	SE	MON	3 PM	Hwy 16 @ Hwy 34		D	P	80	80
98	Wapello	SE	MON	5 PM	T 61 @ Hwy 34		D	S	77	74
99	Wapello	SE	THU	8 AM	V 37 (College St) @ Hwy 34 Agency		D	S	48	37
100	Wapello	SE	TUE	2 PM	Wapello St @ Albia Rd	Ottumwa	E	M	308	283
									12,467	11,559