



Iowa's Strategic Highway Safety Plan (SHSP) | 2019-2023

2

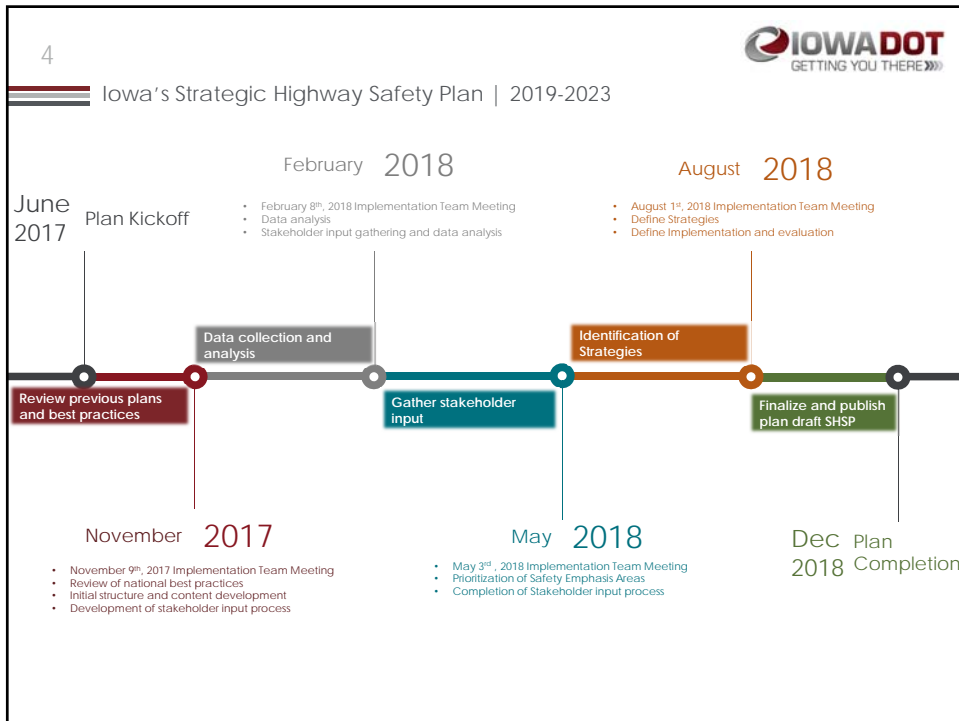
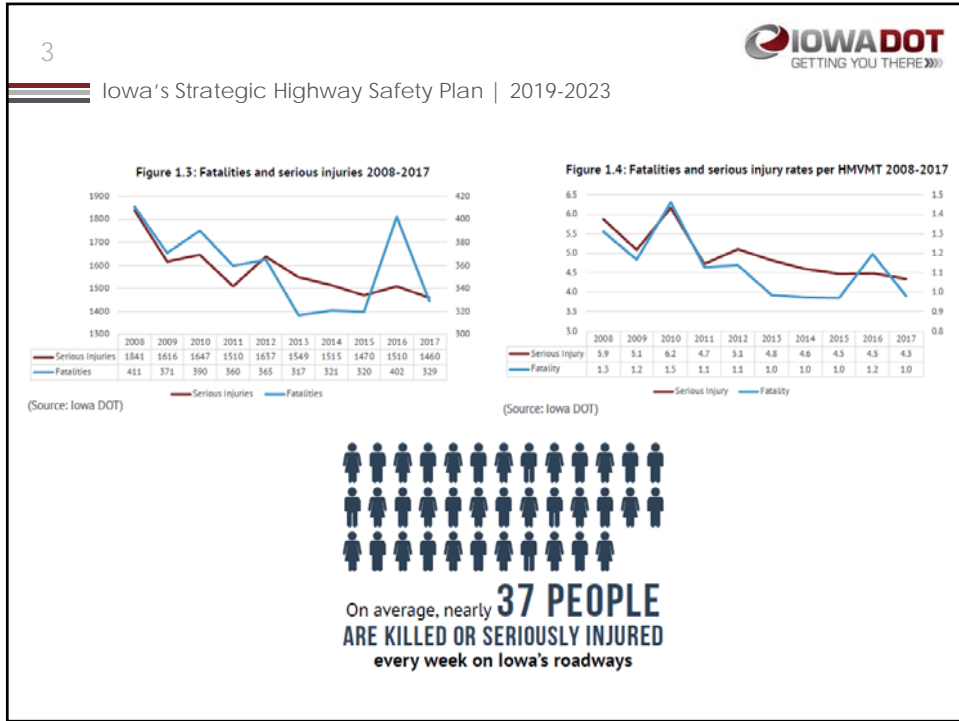


Iowa's Strategic Highway Safety Plan | 2019-2023



What is an SHSP?

"is a statewide coordinated safety plan that provides a comprehensive framework for reducing highway fatalities and serious injuries on all public roads."



Five E's of Safety



Engineering



TIM CROUCH
Traffic Safety Engineer
Iowa Department of Transportation



Enforcement



SGT. GLENN GOODE
Hazardous Materials Specialist
Iowa DOT Motor Vehicle Enforcement



Education



CORINNE PEEK-ASA
Associate Dean for Research,
College of Public Health;
Professor, Occupational and Environmental Health;
Director, Injury Prevention Research Center, University of Iowa



Emergency Medical Services



DR. CHRISTOPHER BURESH, MD, MPH
Representative, State EMS Advisory Council; Medical Director, Keokuk County Ambulance Service; Ambassador to Haiti, American College of Emergency Medicine; Clinical Professor of Emergency Medicine, University of Iowa

Everyone



"In **94 percent** of crashes nationwide the critical reason for the crash can be attributed to **driver error**." -NHTSA



7

IOWA DOT
GETTING YOU THERE

Iowa's Strategic Highway Safety Plan | 2019-2023

Safety Emphasis Areas

Young Drivers Work Zones Winter Roads Unprotected Trains Local Roads

Impaired Road Side Collisions Bicyclists Pedestrian Speed Related Lane Departures

Motorcyclists Distracted Older Drivers Heavy Truck Other Vehicles Intersections

8

IOWA DOT
GETTING YOU THERE

Iowa's Strategic Highway Safety Plan | 2019-2023

Stakeholder Input Process









- Pair comparison poll
 - Safety Emphasis Areas
 - Input gathering was supported by Snyder and Associates
 - Over 600 stakeholders participated in the pair comparison poll.

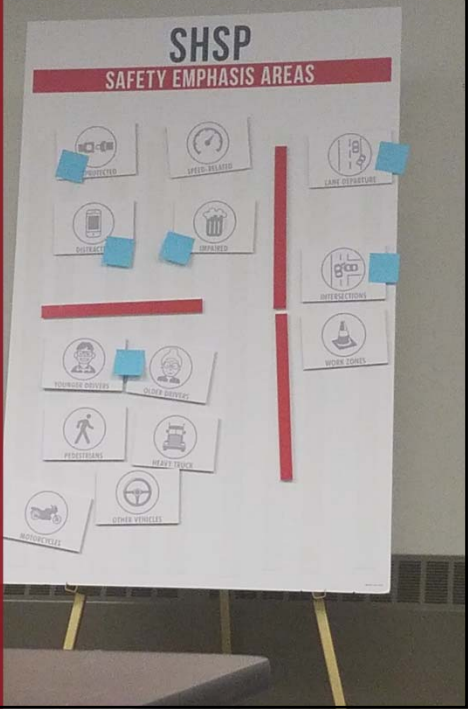
(a) Emphasis areas pair comparison

(b) Professional demographics


(c) Work sector representation

Prioritization

-  Lane departures/Roadside collisions
-  Intersections
-  Distracted
-  Impaired
-  Unprotected Persons
-  Speed-related
-  Older drivers
-  Younger drivers




The image shows a whiteboard titled "SHSP SAFETY EMPHASIS AREAS". It features various icons representing different safety categories, such as "LANE DEPARTURE", "SPEED-RELATED", "INTERSECTIONS", "DISTRACTED", "IMPAIRED", "UNPROTECTED PERSONS", "YOUNGER DRIVERS", "OLDER DRIVERS", "HEAD TRUCK", "MOTORCYCLE", and "OTHER VEHICLES". A red vertical bar is placed on the board, and several blue sticky notes are attached to the cards.

10







Iowa's Strategic Highway Safety Plan | 2019-2023

Strategies

- The SHSP Implementation Team identified 40 strategies.
- Strategies were identified by consulting several Sources including:
 - NCHRP Report 500
 - State Strategies to Reduce Highway and traffic fatalities
 - Previous SHSPs



Lane departures and roadside collisions

-  Evaluate high lane departure crash corridors for two-lane highways and deploy road safety audit (RSA) teams to evaluate.
-  Evaluate high-friction surface treatments (HFST) at targeted locations on state-owned and local systems.
-  Place centerline and/or shoulder rumble strips on rural two-lane highways on state-owned and local systems. Where necessary, install or widen paved shoulders.
-  Continue median cable barrier installations on the Interstate system. Initiate median cable barrier installations on multi-lane divided highways.
-  Focus on the road, don't over-correct or veer for objects or animals in the roadway.

Implementation and Evaluation

Implementation

- SHSP Implementation Team
 - Flexible and responsive to new strategies
- Designated E Teams
 - Disseminate to broader audience



Education



Enforcement



Engineering



EMS



Evaluation

- Evaluation of the plan and progress made on the identified strategies will be done on an **annual basis**.



THANK YOU FOR YOUR TIME AND ATTENTION



Samuel Sturtz
 Transportation Planner
 Office of Systems Planning
 515-239-1788
 Samuel.sturtz@iowadot.us