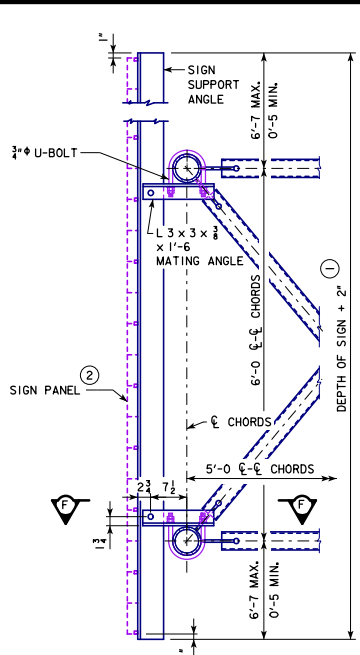
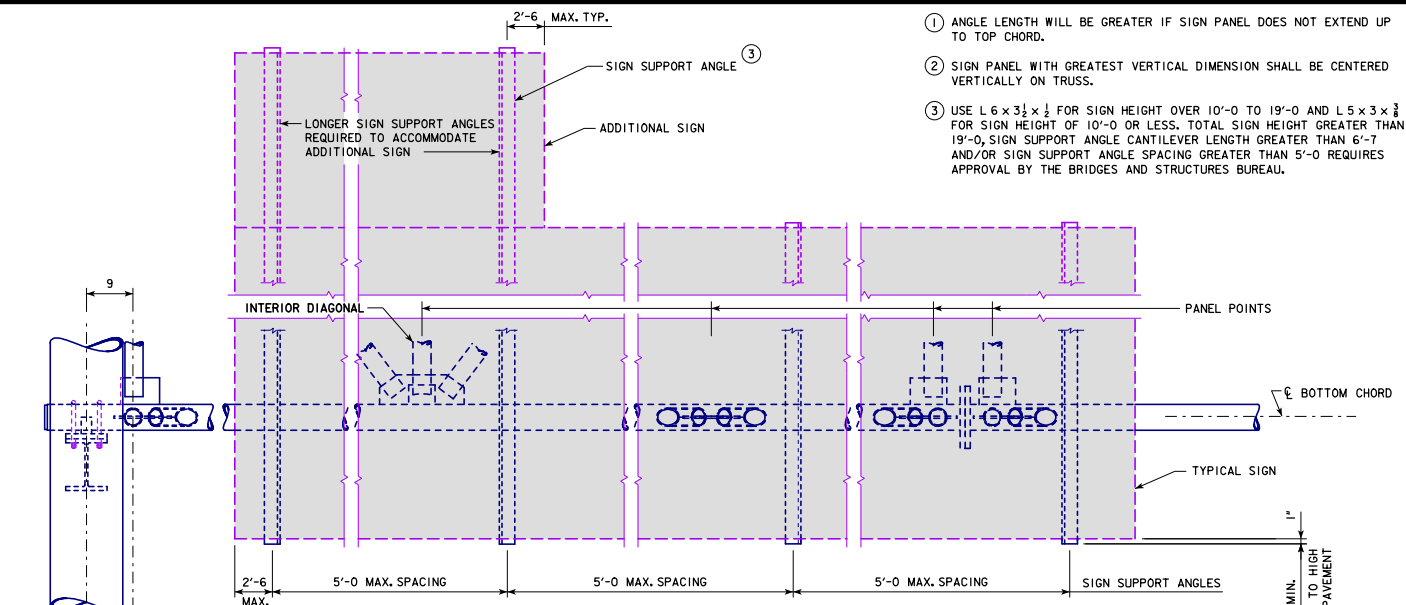


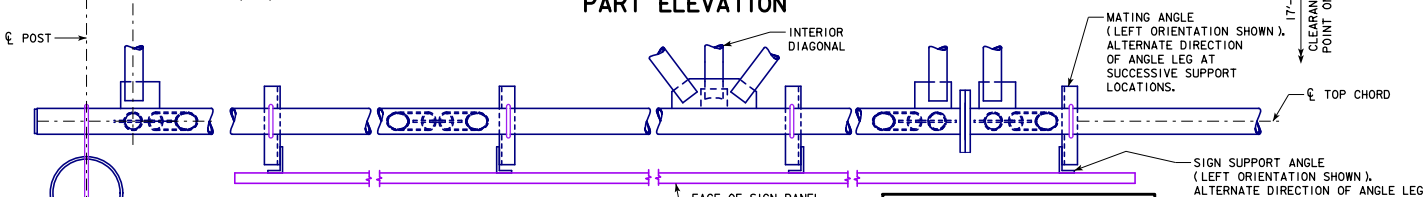
REVISED 04-2020: CHANGED "OFFICE OF BRIDGES AND STRUCTURES" TO "BRIDGES AND STRUCTURES BUREAU", DESIGNATED L 3 x 3 x 3/8 x 1'-6" AS A MATING ANGLE FOR CLARITY IN TYPICAL SIGN PANEL SECTION. CHANGED SECTIONAL DETAIL TO SECTION F-F AND MODIFIED CALLOUTS TO CLARIFY THAT DIRECTION OF ANGLE LEG IS TO ALTERNATE AT SUCCESSIVE SUPPORTS FOR BOTH SIGN SUPPORT ANGLES AND MATING ANGLES.
 -STEELOVERHEADSIGNTRUSS.DGN - SOST-11-11 - THIS SHEET ISSUED 09-2011.



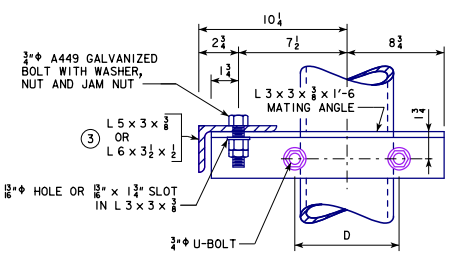
TYPICAL SIGN PANEL SECTION



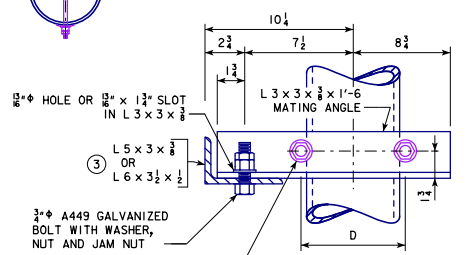
PART ELEVATION



PART PLAN



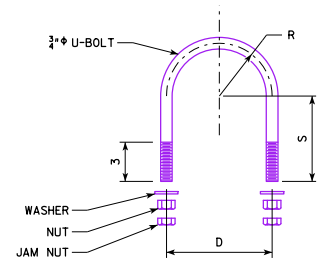
(LEFT ORIENTATION)



(RIGHT ORIENTATION)

SECTION F-F

ALTERNATE DIRECTION OF SIGN SUPPORT ANGLE LEG AND MATING ANGLE LEG AT SUCCESSIVE SUPPORTS AS SHOWN IN PART PLAN.



U-BOLT DETAIL

- ① ANGLE LENGTH WILL BE GREATER IF SIGN PANEL DOES NOT EXTEND UP TO TOP CHORD.
- ② SIGN PANEL WITH GREATEST VERTICAL DIMENSION SHALL BE CENTERED VERTICALLY ON TRUSS.
- ③ USE L 6 x 3 1/2 x 1/2 FOR SIGN HEIGHT OVER 10'-0 TO 19'-0 AND L 5 x 3 x 3/8 FOR SIGN HEIGHT OF 10'-0 OR LESS. TOTAL SIGN HEIGHT GREATER THAN 19'-0, SIGN SUPPORT ANGLE CANTILEVER LENGTH GREATER THAN 6'-7 AND/OR SIGN SUPPORT ANGLE SPACING GREATER THAN 5'-0 REQUIRES APPROVAL BY THE BRIDGES AND STRUCTURES BUREAU.

U-BOLT DIMENSION TABLE				
SPAN	TRUSS CHORD	U-BOLT DIMENSIONS		
		D	R	S
50' - 100'	5" EXTRA-STRONG STEEL PIPE	6 7/16	3 3/32	5 1/2
105' - 130'	6" EXTRA-STRONG STEEL PIPE	7 1/2	3 3/8	6

04-2020 LATEST REVISION DATE APPROVED BY BRIDGE ENGINEER	 STANDARD DESIGN STEEL OVERHEAD SIGN TRUSS SEPTEMBER, 2011
	SIGN ATTACHMENT DETAILS
	SOST-11-11 50'-130' SPANS