

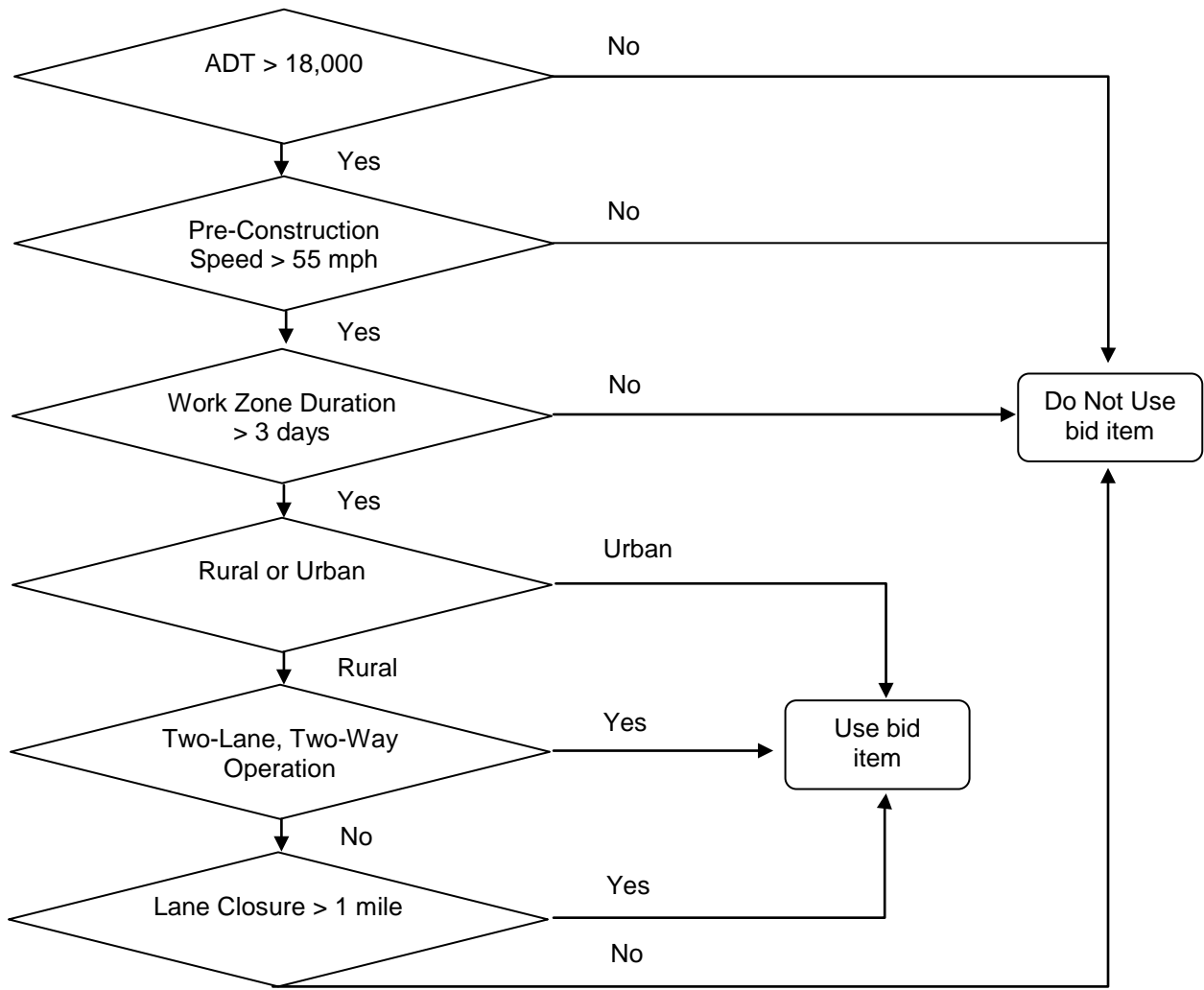
Monitoring with Incident Response

Design Manual
Chapter 1
General Information
 Originally Issued: 09-13-12
 Revised: 07-02-15

The purpose of Monitoring with Incident Response is to provide 24/7 monitoring of a project's traffic control as well as to provide for immediate response to incidents that may occur on the highway. It requires the operator to monitor the Work Zone and re-erect, repair, or replace defective devices and generally maintain the Work Zone so it functions as it was intended to. It is most likely used along heavily traveled roadways or long lane closures where traffic control devices are more likely to be hit by traffic. Use the flowchart to determine if the project should include Monitoring with Incident Response. Work Zone Duration in the flowchart below refers to the duration of a specific traffic control layout, not the effective duration of all layouts on a project.



It is preferable to include Monitoring with Incident Response on a project and have the District Office remove it than to not include it and have it be added by change order.



Chronology of Changes to Design Manual Section: 001G-007 Monitoring with Incident Response

7/2/2015	Revised Revised introduction to clarify Work Zone Duration in the flowchart.
7/22/2014	Revised Updated description and flowchart.
9/13/2012	NEW New.
5/3/2010	VOID